

Product Specifications



Edge™

Edge LED Flood Light

150W Edge LED Flood Light
EO-ED-150

FEATURES

- System Light Efficacy 100 LPW
- Flexible, Modular Design
- Multiple Choice of Optical Lenses
- Easy Installation & Maintenance
- IP66
- Five Years Warranty
- ETL, DLC, CE, RoHS, CB, WEEE

TYPICAL APPLICATIONS

- General Flood Lighting
- Corridor Lighting
- Security Lighting
- Roof Top Lighting

SPECIFICATIONS

PERFORMANCE

LED Chip	OSRAM
Lumen Output (IES)	15,000 lm
Power Consumption	150 W
Efficacy (IES)	100 lm/W
Beam Angle	70/135°, 90°
Color Temperature	4500~5500K (2500~5500K Optional)
CRI	≥80
Lumen Maintenance	L70>100,000 hours (Calculated Using TM-21 Calculator)
Input Voltage	100-277 VAC
Power Factor	0.95 minimum

ENVIRONMENTAL

IP Rating	IP66
Operating Temperature	-30 to 45°C (-22 to 113°F)
Humidity	15% to 90% RH

PHYSICAL

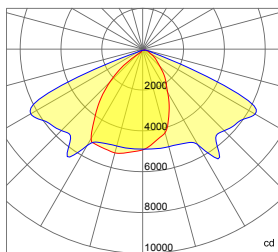
Dimensions (L×W×H)	435×365×225 mm (17.1×14.4×8.9 in)
Weight	6.2 kg (13.7 lbs)
Mounting Options	Universal Hanging Bracket
Fixture Material	Aluminum Alloy

WARRANTY

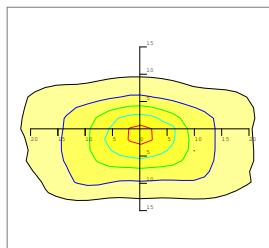
5 Years

Photometrics

70×135° DEGREE LENS



— 0.0~180.0
— 90.0~270.0

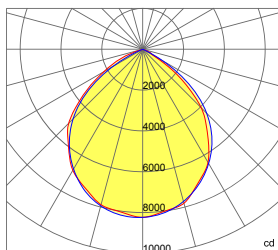


Mounting Hight 10m, 0 Tilt,
50LUX-5LUX

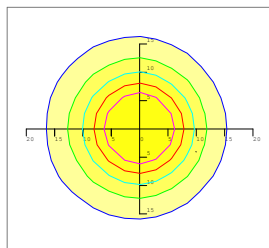
Illumination-70/135 Degree Beaming Angle		
Height	Rectangular Light Spot	LUX
6m	11×29m	97LUX
7m	13×34m	72LUX
8m	15×39m	55LUX
9m	16×43m	44LUX
10m	18×48m	35LUX

Beam Angle (50% max)	70×135 DEG
Field Angle (10%)	100×160 DEG
Luminous Flux (IES)	15,000 lm
Light Efficacy (IES)	100 lm/W
Cutoff Classification	Cutoff

90 DEGREE LENS



— 0.0~180.0
— 90.0~270.0



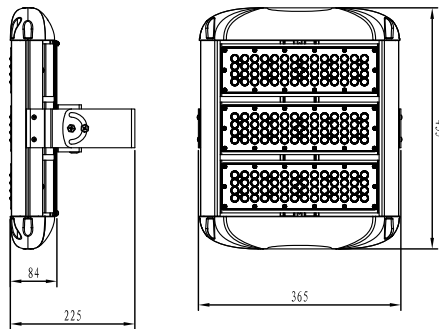
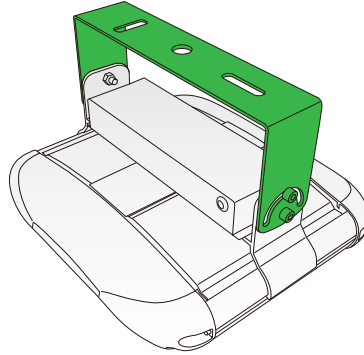
Mounting Hight 16m, 0 Tilt,
50LUX-5LUX

Illumination-90 Degree Beaming Angle		
Height	Beam Diameter	LUX
6m	φ 16m	133LUX
7m	φ 19m	101LUX
8m	φ 23m	78LUX
9m	φ 24m	62LUX
10m	φ 28m	50LUX

Beam Angle (50% max)	90 DEG
Field Angle (10%)	130 DEG
Luminous Flux (IES)	15,000 lm
Light Efficacy (IES)	100 lm/W
UGR	25
Cutoff Classification	Cutoff

Mounting Options

Universal Hanging Bracket



Ordering Information

