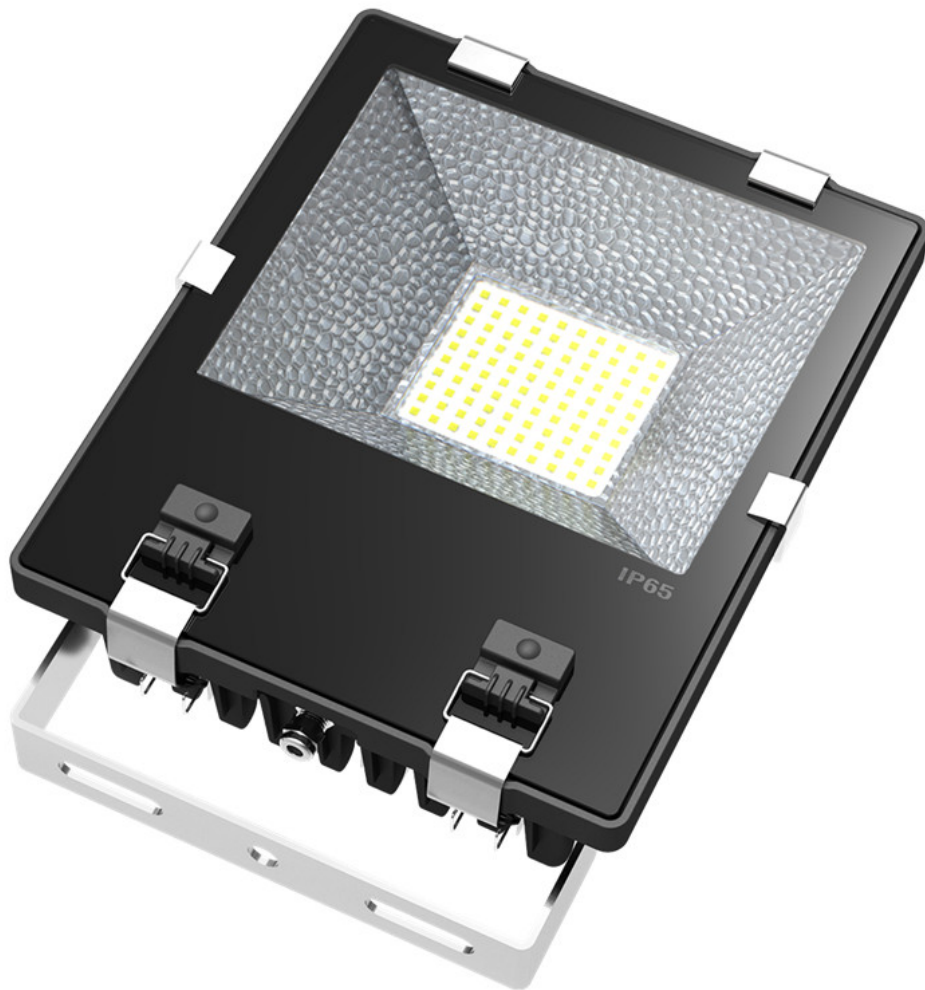




## PRODUCT SPECIFICATION

### LS 150W LED Flood Light

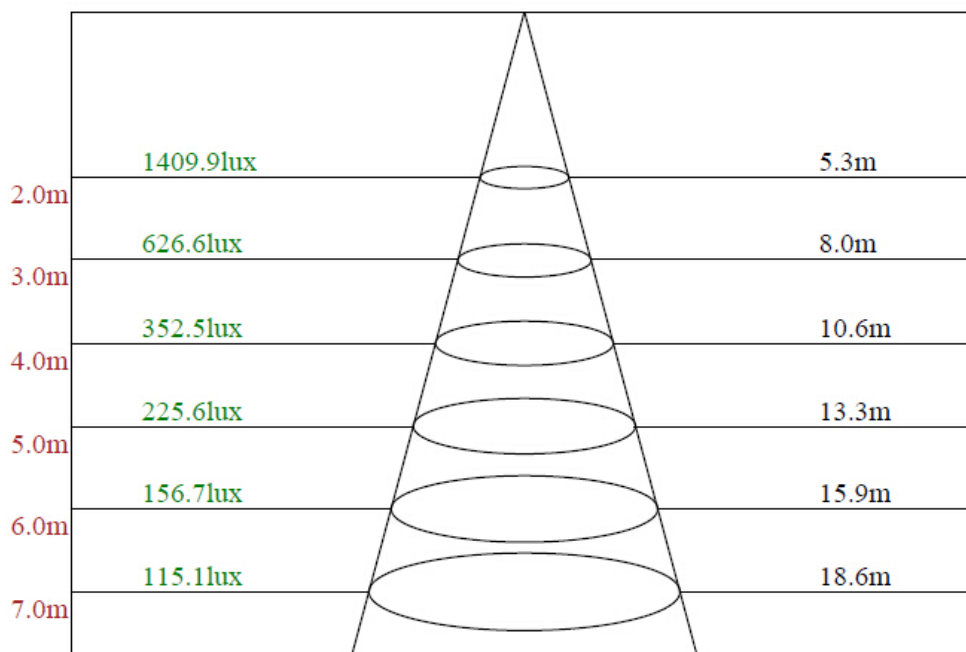


**LM79**  
**LM80**

## ● Technical Parameter

Model	LS-FLC150W
Power	150W
Voltage	AC90-277V OR 347V
Working Frequency	50-60HZ
Power Efficiency	>100%
Luminous Flux	15,000LM
Power Factor	>0.90
Color Temperature	WW: 2700 - 3300K    NW:4000 - 4500K    CW: 5000 - 5500K
CRI	Ra $\geq$ 75
Beam Angle	130°
Working Temperature	-30 to +60 °C
IP Rate	IP65
Life-span	50,000hrs life, 5 Years Warranty

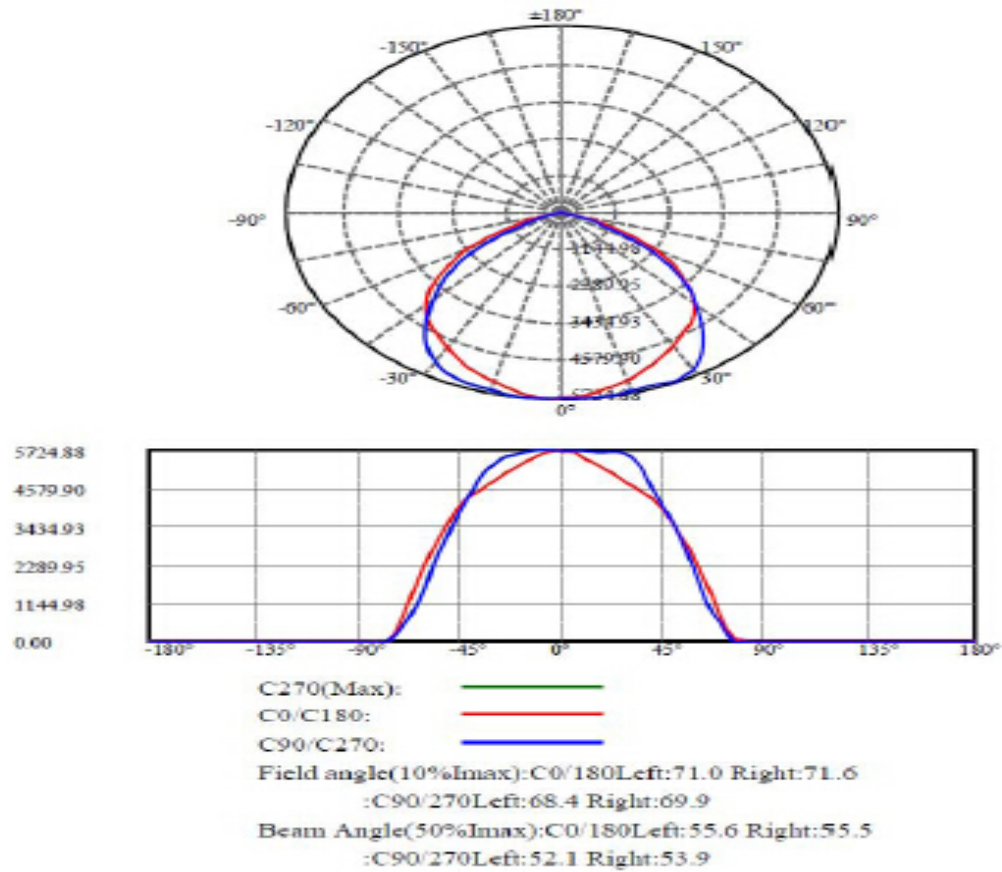
## ● Lux Parameter



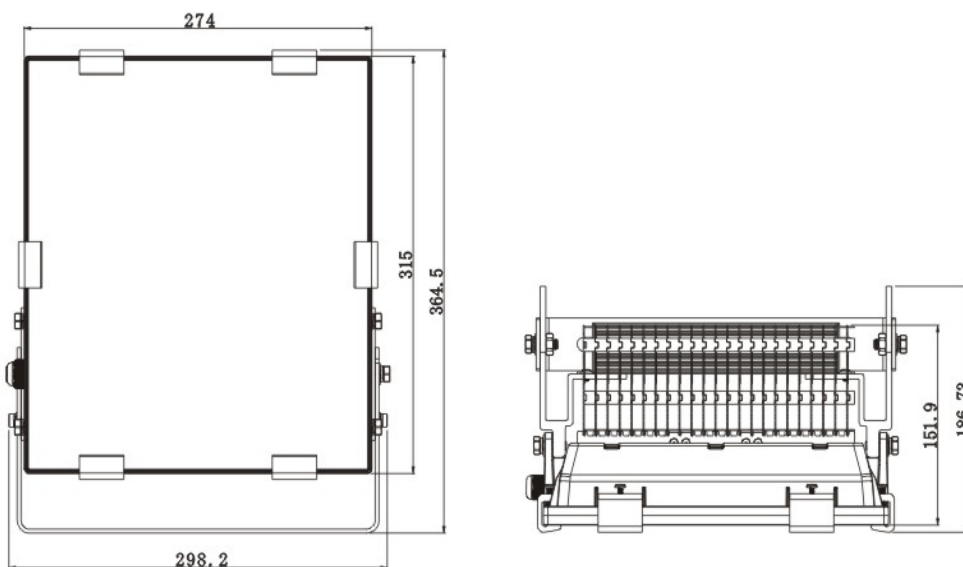
Beam angle of C270plane105.99

● Light Distribution Curve [Unit:cd]

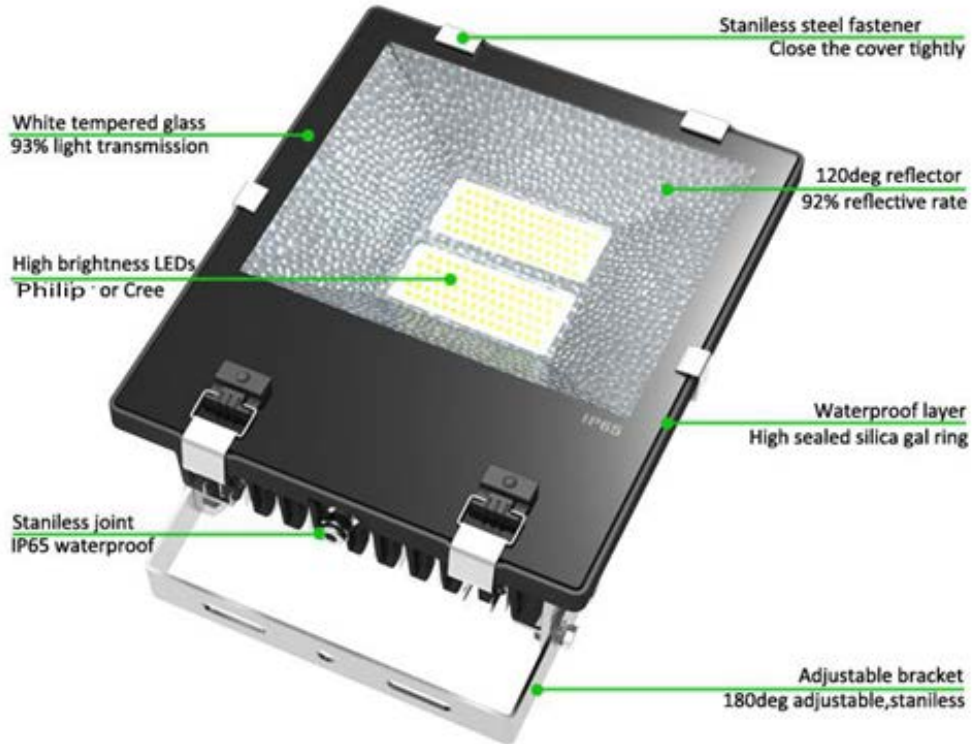
Light Distribution Curve [Unit: cd]



● Dimension



## ● Product Details



## ● Installation

- 1、 Before installation, please check the installation guide as Diagram1, Diagram 2 and Diagram 3 shows.
- 2、 Please fix the stands of the fixtures on the mounting holes and lock the stands by screws.
- 3、 Ensure the luminous direction is down. just like Diagram 4 shows.
- 4、 Connect ( L: Black N: White GND: Green ), According to the American connection standard.
- 5、 IP grade: IP65
- 6、 Switch on power
- 7、 Please see attach connect instruction

