

IR3 ALUMINUM HAZARDOUS LOCATION CLASS 1 DIV 2 LED Fixture

IR3-4-2-S-LED-UNV (80- total watts) HAZARDOUS LOCATION FIXTURE



FIXTURE FEATURES

Intended Use

Intended for hazardous location applications:

- Class I, Div. 2-Groups A, B, C, D

Typical applications include solvent and cleaning areas, petrochemical facilities, marine facilities, waste treatment plants and food processing applications. Daylight Color Temp.

Construction

- Extruded aluminum housing and clear lens.
- End mounting brackets are standard with fixture.

Driver/ Watts / Lumens

Energy efficient, 120-277 multi-volt, electronic, automatic starting drivers are standard in all fixtures. 2- 40 watt LED Strips / Fixture. 4,000 lumens per strip. 80 total watts 8,000 lumens. Cold start below -20 F.

Listings

UL 595 – Outdoor Marine Type (salt water)
UL 844 / C-UL– Class I, Div 2, A,B,C,D
Meets Coast Guard Specifications

Approximate Fixture Dimensions & Weights

Length: 49.75-inches
Width: 6.5-inches
Height (to top of fixture) 6.5-inches
Height (to top of mounting brackets) 11.75-inches
Weight: 33 lbs

Mounting

Fixture can be surface mounted with swivel brackets or suspended.

Warranty

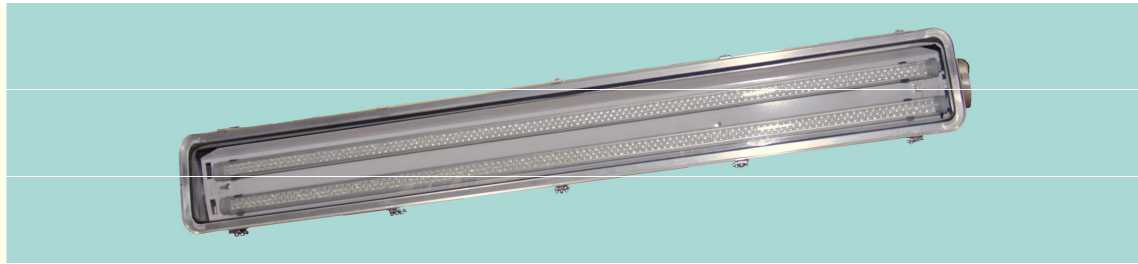
Fixture is warranted for five years from delivery date against manufacturing defects.

Accessories

- Wire Guard
- Safety Cable
- Shock Mount

IR3 ALUMINUM HAZARDOUS LOCATION CLASS 1 DIV 2 LED Fixture

IR3 LED STRIP FIXTURE- Dimensions



DIMENSIONS

A- 49 ¾ "

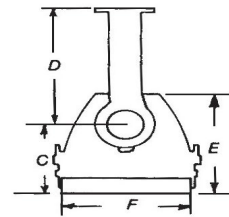
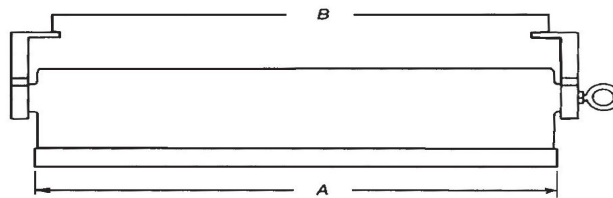
B- 47 "

C- 4 ¾ "

D- 7 "

E- 6.5 "

F- 6.5 "



LED ARRAY STRIPS - The Fixture comes equipped with 2- 40 watt LED Strips. 4,000 Lumens per strip. 80 total watts / fixture - 8,000 total lumens.

