



HS-K1 Series

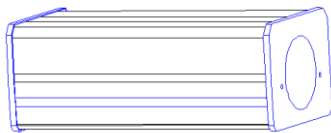
LED Low Profile Linear High Bay



Unique High Quality Aluminum Design for use as traditional High Bay or for use in areas that require IP66 Protection from Water and Dust.

- High Lumen Output of 170 lumen / watt
- 50 watt to 250 watt versions available
- Durable Aircraft Aluminum Quality

HS-HB50W-K(1module)



H:95mm

L:305mm

W:122mm

All Dimensions are in[mm]

Electro-Optical Characteristics

Features

Input Voltage(typ)	AC90-305V/100-277V/180-528V
Tested@(Voltage)	220Vac
Power Consumption	50w
Current Consumption	0.23A
Efficacy:(Lm/w)	170
Lumens	8500lm
THD	15%-20%
Power Factor	0.95
CRI(Ra)	80
CCT	2700-6000k
Viewing Angle	60/90/120°
LED source	PHILIPS 3030Leds

OperatingTemperature	-40°Cto+55°C
Dimmable	YES (0-10V)
Housing Material	aviation aluminum
Lens Material	PC
Housing Color	White/Black
Driver	MEANWELL
Protection Rating	IP66
Warranty	7Years
SMD LED/Qty.	77pcs
Net weight	2.7kg
Outer carton size(cm)	39.5*19.5*17cm
G.W per ctn	3.7kg

Part No.	HS-HB50W-K1	Page	2 of 5
-----------------	--------------------	-------------	---------------

HS-HB100W-K1 (2 modules)



H:95mm

W:122mm

L:600mm

All Dimensions are in[mm]

Electro-Optical Characteristics

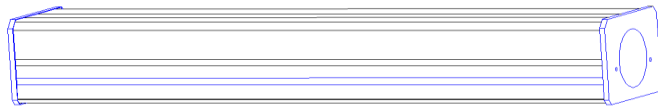
Features

Input Voltage(typ)	AC90-305V/100-277V/180-528V
Tested@(Voltage)	220Vac
Power Consumption	100w
Current Consumption	0.45A
Efficacy:(Lm/w)	170
Lumens	17000lm
THD	15%-20%
Power Factor	0.95
CRI(Ra)	80
CCT	2700-6000k
Viewing Angle	60/90/120°
LED source	PHILIPS 3030Leds

OperatingTemperature	-40°C to +55°C
Dimmable	YES (0-10V)
Housing Material	Aviation aluminum
Lens Material	PC
Housing Color	White/Black
Driver	MEANWELL
Protection Rating	IP66
Warranty	7Years
SMD LED/Qty.	154pcs
Net weight	3.6kg
Outer carton size(cm)	69.5*19.5*17cm
G.W per ctn	4.7kg

Part No.	HS-HB100W-K1			Page	3 of 5
-----------------	---------------------	--	--	-------------	---------------

HS-HB150W-K1(3modules)



H:95mm

L:895mm

W:122mm



All Dimensions are in[mm]

Electro-Optical Characteristics

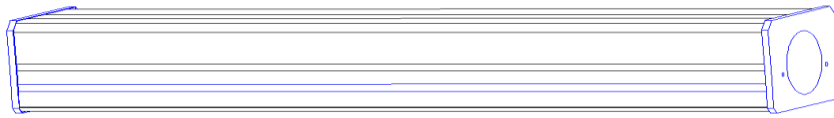
Features

Input Voltage(typ)	AC90-305V/100-277V/180-528V
Tested@(Voltage)	220Vac
Power Consumption	150w
Current Consumption	0.68A
Efficacy:(Lm/w)	170
Lumens	25500lm
THD	15%-20%
Power Factor	0.95
CRI(Ra)	80
CCT	2700-6000k
Viewing Angle	60/90/120°
LED source	PHILIPS 3030Leds

OperatingTemperature	-40°C to +55°C
Dimmable	YES (0-10V)
Housing Material	aviation aluminum
Lens Material	PC
Housing Color	White/Black
Driver	MEANWELL
Protection Rating	IP66
Warranty	7Years
SMD LED/Qty.	231pcs
Net weight	5.6kg
Outer carton size(cm)	98.5*19.5*17cm
G.W per ctn	6.7kg

Part No.	HS-HB150W-K1			Page	4 of 5
-----------------	---------------------	--	--	-------------	---------------

HS-HB200W-K1/ HS-HB250W-K1 (4 modules)



L:1190mm

W:122mm

H:95mm



All Dimensions are in[mm]

Electro-Optical Characteristics

Features






Input Voltage(typ)	AC90-305V/100-277V/180-528V
Tested@(Voltage)	220Vac
Power Consumption	200w/250w
Current Consumption	0.91A/1.145A
Efficacy:(Lm/w)	170
Lumens	34000lm/42500lm
THD	15%-20%
Power Factor	0.95
CRI(Ra)	80
CCT	2700-6000k
Viewing Angle	60/90/120°
LED source	PHILIPS 3030Leds

OperatingTemperature	-40°Cto+55°C
Dimmable	YES (0-10V)
Housing Material	aviation aluminum
Lens Material	PC
Housing Color	White/Black
Driver	MEANWELL (ELG-240)
Protection Rating	IP66
Warranty	7Years
SMD LED/Qty.	308pcs
Net weight	6.9kg
Outer carton size(cm)	128*19.5*17cm
G.W per ctn	8.2kg

Part No.	HS-HB200W-K1 /HS-HB250W-K1			Page	5 of 5
-----------------	-----------------------------------	--	--	-------------	---------------

Accessories



Installation accessories for choosing		
	HS-01	A, Standard fittings with 2pcs buckles,if need other installation way, the price for accessories are as follows
	HS-02	A, Suspended Mounting B, Chain length : 1m/pcs, total 2 pcs with safty ring and screws.
	HS-03	A, 2pcs Pole-hang buckle with screws
	HS-04	A, 1 Connection buckle(For Two or more modules) with screws
	HS-05	A, Adjust bracked : 1、 Surfaced mounting ; 2、 wall mounted ; 3、 ground mounted ; B, Can adjusted different beam angle. Maximum 90°. C, 1 brackets with screws